

姉妹都市

SEATTLE-KOBE SISTER CITY ASSOCIATION

Volume 15, Issue 1

Celebrating 57 Years of a Vibrant Sister City Relationship

August 2014

The Tenth Seattle-Kobe Female Jazz Vocalist Audition

On February 24, 2014, the Seattle Kobe Sister City Association (SKSCA) held its tenth annual Seattle-Kobe Female Jazz Vocalist Audition. We thank the audition participants, their friends and family, and our members for their support!

Five high school finalists and seven adult finalists performed two songs each. Each song was evaluated on the basis of technical and artistic merit. The judges selected a winner for each category to represent Seattle in Kobe, as well as selected two singers for the special mention category.

The judges selected **Jennifer Kienzle** and **Laura Rosok** to represent Seattle and perform at the 15th Annual Kobe Jazz Queen Contest on May 10, 2014 in Kobe, Japan. **Kate Voss** and **Sarah Freyd** received the Special Mention Award for the Adult and High School division, respectively. These awards also came with \$150 gift certificates to Dimitriou's Jazz Alley.

Ms. Kienzle wooed the judges with *I Didn't Know What Time It Was* and *Body and Soul*. She performs throughout the Seattle area. Prior to moving to Seattle, she performed with many jazz



SKSCA Board Chair Karin Zaugg Black, Kate Voss, Jennifer Kienzle, Laura Rosok, Sarah Freyd, SKSCA Vice Chair and Jazz Program Coordinator Mari Maruyama Carpenter

bands in

Germany. She sang with the Daimler-Chrysler Jazz Band, University Big Band of Ulm and the Schwoerhaus Big Band.

Ms. Rosok just completed her junior year at Kings School

(continued on page 5)

15th Annual Kobe Jazz Day at Jazz Alley- Sept. 15, 2014

Last September, SKSCA welcomed the 14th Kobe Jazz Queen, **Aki Miyafuji**, to the Jazz Alley stage. Born in Kyoto, Aki Miyafuji was fascinated with standard jazz music and started singing in 1994. Aki regularly performs as a member of jazz vocal duo, Gee Baby, mainly in Kyoto.



Ms. Rie Takahashi coming soon to Seattle!

Aki's engaging interaction drew everyone in with her singing. **Randy Halberstadt** (piano), **Mark Ivester** (drums) and **Jeff Johnson** (bass) accompanied Aki as though they had performed together for years. When her first set concluded, the SKSCA Female Jazz Vocalist winners, **Leah Natale** and **Sofie Smith**, joined Aki on stage to share with the audience the experience of this sister city jazz exchange. At the end of second set, Aki invited her singing partner and saxophonist, both from Japan, to join her and the Halberstadt trio on stage. It was a magical evening as the trio became a quartet, jamming with the duo.

Join us September 15, 2014 at Jazz Alley to hear the lovely Ms. Rie Takahashi, the 2014 Kobe Jazz Vocal Queen.

Make reservations at www.jazzalley.com

We'll be celebrating the 15th anniversary of this exchange!

A Big THANK YOU to Our Corporate Sponsors!

We greatly appreciate the support of the following businesses and organizations:

55th Anniversary Sponsors

Gold Sponsor:
Gobo Enterprises

Silver Sponsor:
Port of Seattle
YMCA of Greater Seattle

Founder Level

Dimitriou's Jazz Alley
Gobo Enterprises
Junglecite Network
Sankei Travel
Seattle Art Museum
YMCA of Greater Seattle
Benefactor Level
Hyogo Business & Cultural Ctr.

Patron Level

Japan-America Society
Seattle Mariners
TCB Properties
US-Japan Foundation

Supporter Level

Associates in Cultural Exchange
Baron-Charms International Services
Corporate Computer, Inc.

Kobe Trade Information Office
NorthWest Student Exchange
Pacific Northwest Budo Association
Port of Seattle
Seafair
Seattle Yacht Club
Starbucks
Uwajimaya
Yamato Transport USA

Message from the Chair



Happy summer days in the greater Seattle area!

I hope you have been soaking in all this sunshine we've been having, and staying cool.

(We have to enjoy the sun now in order to survive the darker winter months!)

September 6th and 7th we'll have a booth at the Aki Matsuri on the Bellevue College campus, and on Monday, September 15th, we're excited to welcome the 2014 Kobe Jazz Vocal Queen for her debut concert at Dimitriou's Jazz Alley – definitely a fun evening not to miss!

As always, we could not continue our exchanges and programs without your support. Membership invoices for 2014 will be emailed soon – we thank you in advance for renewing and donating to SKSCA! The SKSCA is a 501(c)3 non-profit organization and donations are tax-deductible.

We are an all-volunteer organization, and I'd like to recognize all of our board members and members who keep our programs going. Thank you! We look forward to updating you about more events and programs we're planning in the coming months.

In addition to more regular newsletters and email updates, you can follow us on Facebook (Seattle-Kobe Sister City Association) and of course our website, www.seattlekobe.org. I look forward to seeing you at one of our events in August or September.

Warmly,

Karin Zaugg Black
Chair, Seattle-Kobe Sister City Association

2014 Events Calendar

Sept 6-7	ENMA Aki Matsuri— SKSCA booth
Sept 15	15th Jazz Vocalist Queen Concert at Dimitriou's Jazz Alley
Sept 26-Oct 1	Kobe High School Students visiting Seattle with Seafair Exchange
October	SKSCA Happy Hour
Nov 1-8	Seafair Ambassadors in Kobe for Seafair High School Exchange

Eckstein Middle School Exchange Visit - March 2014

Seattle –Kobe Sister City Association (SKSCA) partnered with Eckstein Middle School teacher **Kurt Thompson**'s Japanese classes to host 8 Kobe-Seattle Sister City Association (KSSCA) middle school students from March 21 through March 30, 2014.

The Kobe students were: **Ryota Yagi** (KSSCA president **Eri Yagi**'s son), **Masaki Matsumura**, **Sayaka Matsuoka**, **Yuito Nishikawa**, **Haruki Tada**, **Shuuta Tane**, **Rie Yamauchi**, and **Masaki Yanase**, and they were chaperoned by KSSCA board member **Yoshiharu Takami**.

The students had an eye-opening and educational experience as they stayed with American host families, explored Seattle sights, attended classes at Eckstein Middle School and visited University Prep Middle School for a day exchange. They were also able to visit the Microsoft campus for a special tour and learn about the company firsthand.

A huge, warm Seattle-Kobe Sister City Association ARIGATO to Eckstein Middle School's Kurt Thompson, University Prep's **Lauren Denton**, **Lauren Feng**, and **Yayoi Brown**, **Frank** and **Mary Montgomery** (hosts for the SKSCA potluck gathering), volunteers **Chico Otsuka-Gooding** (driver extraordinaire!), **Tish Johnson**, **Cindy Rekdal**, **Marcus Helm**, **Jim Nunn**, and **Atsuko Yoshikawa**, and Kobe Trade Information Office Director **Masao Kakiuchi**, and especially host families for the students: **Choi family**, **Dinehart family**, **Funk family**, **Ohtake family**, **Redfield family**, **Rosenbloom family**, and **Zaugg Black family**.

The Kobe students continue to study English and think fondly of their time in Seattle!



Kobe students with Seattle community members

Jan 17, 2015	20th Anniversary of Kobe Earthquake— Kobe Bell Ceremony
Feb, 2015	Shinnenkai (New Year's Party)

SKSCA at the Seattle Cherry Blossom Festival

The 39nd Annual admission-free Seattle Cherry Blossom & Japanese Cultural Festival was held April 25-27, 2014 at the Seattle Center. The Seattle-Kobe Sister City Association continued its tradition of hosting a kimono-yukata dress-up booth. Friends and family got to spend the weekend at the Cherry Blossom Festival and see the fun things going on, with hands on activities for everyone! The festival featured traditional dance and music, colorful costumes, martial arts, tea ceremonies, and entertaining educational activities.

The festival is presented by Seattle Cherry Blossom and Japanese Cultural Festival Committee, which founded



Students showing off their yukata at the Seattle Cherry Blossom & Japanese Cultural Festival

the festival in appreciation of the gift of 1,000 cherry trees to the city by Japanese Prime Minister **Takeo Miki** in commemoration of the nation's bicentennial in 1976.



A big THANK YOU to all our wonderful volunteers, especially organizers **Ben Erickson** and **Leela Bilow**.

Chisa Takeda, Kobe Festival Representative in Seafair

Kobe Festival Ambassador **Chisa Takeda** recently represented Kobe in the Seafair Torchlight Parade. She enjoyed Seattle, including visiting the Pike Place Market, first Starbucks store, the Great Wheel, and a Mariners baseball game.

A big thank you to Kobe Trade Information Office Director **Masao Kakiuchi** for helping with arrangements, SKSCA board member **Brian Chu** for taking her to the baseball game, and SKSCA member **Ann Brittain** for hosting her during her stay. Chisa was amazed at how many people recognized Kobe as Seattle's sister city during the Seafair parade. She experienced a warm welcome.



Ms. Chisa Takeda in the staging area for the Seafair Torchlight parade

Volunteers Needed for SKSCA Booth at Aki Matsuri

The SKSCA will once again host a booth at Aki Matsuri and is looking for volunteers to help. It will be a fun time and a great opportunity to help promote SKSCA! Aki Matsuri will take place on Saturday, September 6th and Sunday, September 7th at Bellevue College.

You can find more information about Aki Matsuri at www.enma.org.

Please e-mail **Rebecca Skoog** at rebecca.skoog@outlook.com if you would like to volunteer or have questions. Shift details will be sent as we get closer to the date. Thank you for your generous support and help with the SKSCA booth for Aki Matsuri!



Amazing community members volunteering and helping host the SKSCA booth at Aki Matsuri

Jazz Vocalist Audition

(continued from front page)

-side of school, she has competed in many jazz and music festivals. She selected *Almost Like Being in Love* and *Quiet Nights of Quiet Stars (Corcovado)* to showcase her voice.

Ms. Voss auditioned with *Lush Life* and *Sweet Georgia Brown*. She developed her technical skills through award winning choirs and musicals throughout high school, and in 2003, she fell in love with jazz. Kate followed up this love by connecting with the best vocalist/teacher in town: **Greta Matassa**. Not only does she share her love of jazz throughout the area, she teaches music at West Side Music Academy.

Ms. Freyd just finished her junior year at Edmonds High and has had a long standing passion for singing. During the audition, she sang *There Will Never Be Another You*, and *Someone to Watch Over Me*.

While the judges deliberated, the audience had a special treat listening to last year's adult division winner, Ms. **Leah Natale**. She spoke to the audience about her experience in Kobe and enthralled the audience with several of her favorite tunes.

It was an amazing evening! We hope readers will check the SKSCA website later this fall for the date of the Eleventh Seattle-Kobe Female Jazz Vocalist Audition to be held in early 2015.

In the meantime, the winner of the 15th Kobe Jazz Queen Contest will perform at Jazz Alley on Monday, September 15, 2014. Please mark your calendars, reserve a table at Jazz Alley, and be ready for another wonderful evening of jazz and the sharing of the love of jazz with friends from across the Pacific.

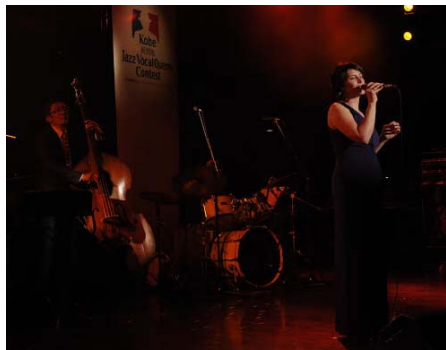
My All Too Brief Visit to Kobe

By Jennifer Kienzle

2014 SKSCA Female Jazz Vocalist Adult Division Winner

It is now about 3 months after this incredible trip to Kobe, and I still marvel about all the beauty of Kobe and all the things I was lucky enough to experience. I would like to share with the SKSCA membership some highlights from our trip.

The flight to Kansai Airport went well and Asiana Airlines provided great service. **Ms. Yumi Imai** picked me up at the airport and drove me to the hotel where I was able to enjoy the nighttime views of Kobe from my hotel room. The next morning, I met up with **Laura Rosok** and her parents to take a ride up the "Rope Way" to see the herb gardens and admire the views from the hills behind our hotel.



Jennifer performing live at the Kobe Jazz Vocal Queen Contest

Later that day, Yumi and **Yoshio** picked us up to go to SONE to hear **Aki Miyafuji**, last year's Kobe Vocal Jazz Queen, perform. What a cozy and inviting place! And so was Aki, as she invited Laura and me to sit in for a few tunes.

On Saturday we went to KVIC hall for the big event. We were able to

rehearse our songs with wonderful musicians and also got to listen a bit to the other singers rehearsing. How exciting! During some waiting time, I took the opportunity to walk through the streets of Shinkaichi and explore the music festival. Folk, Pop, Rock, Jazz... I was able to listen to everything. Then the big performance we had all been waiting for! Everyone working on this was so sweet and everything so well organized. The band sounded great and though the nerves were there, I loved representing Seattle and its jazz vocalists. I was also excited to congratulate **Rie Takahashi**, the new 2014 Kobe Shinkaichi Vocal Jazz Queen!

After the show, Aki Miyafuji, **Shoko Okumura**, Laura and I performed "All Of Me" live for a radio station. So fun! We could have gone on and on and on! We were next invited to a great local restaurant with the most delicious food.

Aki Miyafuji contacted me and invited me to come to the Shinkaichi music festival that night. She was performing on the big stage. There I met Rie and after Aki's gig got to meet the organizers of the festival and then listened to a great funk band. We were invited backstage and before we knew what was happening, they had Rie and me get on stage and we were introduced to the audience—live on TV. It was amazing!!!

Those few days were so great and I experienced so much in this little time. Thank you to all who were involved in this and made my dream come true. I hope to be back soon, there is still so much I'd like to see!

An Unforgettable Experience

By Laura Rosok

SKSCA Female Jazz Vocalist High School Division Winner

Jazz has been a key part of my life for the last five years, but even so, when I received the early morning email inviting me to sing at Dimitriou's Jazz Alley on February 24, I was ecstatic. It was not only a pleasure and a privilege to perform at Jazz Alley, but to be chosen as the high school division winner of the Seattle-Kobe Sister City Association Female Jazz Vocalist Competition was an incredible honor. That said, I could not have achieved this personal musical milestone without the support and guidance from my vocal teacher, **Darla Pumphrey**, and my accompanist on the bass at Jazz Alley, **Jon Hamar**.

Two months later, my parents and I were boarding a plane headed for Japan, complete with my jazz charts and the nervous anticipation of what was to come. As beautiful as Kobe was, I was unable to enjoy the Japanese cuisine or sightsee for the majority of the trip due to an unfortunate illness. Our wonderful hosts in Kobe, **Yumi** and **Yoshio Imai**, were extremely kind, and rushed me to their local doctor's clinic as soon as they heard of my predicament. I am also truly grateful to **Dr. Karakawa**, the doctor running the clinic, for being genuinely invested in my health and recovery.

Near the end of the trip I was feeling well enough to venture out of my hotel room at the Ana Crowne Plaza Hotel. We took a short trip, along with Jennifer Kienzle, the adult division winner, on a little swaying gondola up to a lovely German-inspired Herb Garden. That evening, Jennifer and I sang at one of Kobe's popular jazz clubs called Sone, where we met last year's Jazz Queen Contest winner, **Aki Miyafuji**, and her band members; but this was only the warm-up act!

The 2014 Jazz Queen Vocal Contest occurred on the last full day of my trip. This was arguably my favorite day and the highlight of this amazing experience, because I had the opportunity to sing three jazz tunes and hear Jennifer and the ten contestants perform! Congratulations to **Rie Takahashi** for winning the competition in Kobe, and I look forward to singing with her again in September when she comes to Seattle! It was such a thrill to sing amidst the smoke and light show and in front of a TV camera, but a truly unexpected surprise was seeing Dr. Karakawa in the audience, this time viewing me on stage instead of on his examination table.



Laura singing live in Kobe, Japan in Sone, a popular Jazz Club

After the main performance, Aki, Jennifer, Shoko Okumura (a past winner of the Kobe contest and host of the night), and I sang live on a Japanese radio show. This day was the best possible way the trip could have ended, and although I jumped through some unexpected obstacles on the way, it was an unforgettable experience. The kindness and consideration of everyone we met in Japan and their love of jazz was inspiring and energizing. I can't wait to go back to Kobe!

2014 Membership Invoices Hitting Mailboxes Soon!

We don't always send out our membership letters at the same time each year, but our annual membership dues always cover the current calendar year—no matter when you join or renew!

Wait for your annual membership letter and invoice,
or save some time and

JOIN OR RENEW TODAY! It's up to you!

2014 Membership Categories and Dues

Individual	\$30
Family	\$50
Senior	\$15
Student	\$15

Major and Corporate Gift Levels

Supporter	\$125-\$249
Patron	\$250-\$499
Benefactor	\$500-\$999
Founder	\$1,000+

To renew online: Visit seattlekobe.donortools.com

To renew by check: Send a check payable to SKSCA to: 3115 NE 65th St., Seattle, WA 98115-7228

Did you know you can check your own past membership payments online?

Method 1: Visit <https://seattlekobe.donortools.com/my/join> and follow the instructions.

Method 2: Visit www.SeattleKobe.org and click “Membership” in the left navigation pane. Then at the bottom of the page, click “Click here to join or renew your membership.” Click “My Donations” and follow the instructions.

New Membership/Membership Renewal/Volunteer Form

August 2014

Name _____

Company _____

Address _____

Address _____

City _____ State _____ Country _____ Postal Code _____

Phone _____ Fax _____ E-mail _____

Please enclose your mailing label if there are any changes. Thank you!!

SKSCA is a 501(c)3 non-profit organization, IRS tax identification # 23-7034425.

Membership dues are a tax deductible donation.

Individual: \$30 Family: \$50 Senior/Student: \$15

Corporate and Major Gift Levels

Supporter: \$125-\$249 Patron: \$250-\$499 Benefactor: \$500-\$999 Founder: \$1,000-plus

_____ I am a **current** member renewing my dues and I have enclosed \$_____.

_____ I am a **new** member and I have enclosed \$_____.

_____ I am interested in volunteer opportunities. Please send me more information.

Please mail this form and a check to:

SKSCA c/o Stacey Jehlik, 3115 NE 65th St, Seattle, WA 98115



c/o Stacey Jehlik
3115 NE 65th St.
Seattle, WA 98115 USA

Non-Profit Org.
U.S. POSTAGE
PAID
SEATTLE, WA 981
PERMIT NO. 5503