

姉妹都市



SEATTLE-KOBE SISTER CITY ASSOCIATION

Volume 5, Issue 2

Our Fifth Decade of Friendship

November 2001

Seattle Sister Cities Reception November 27, 2001 5:30-7:30 p.m.



Mayor Paul Schell and the Seattle City Council invite you to join them in honoring our 21 sister city associations on Tuesday, November 27, 2001. Come join us for a fun evening that will include:

- Delectable Hors d'oeuvres
- Delightful Entertainment
- Raffle (with exciting international prizes!)

**Artic Building Dome Room
700 - 3rd Avenue**

(On Cherry St. between 3rd & 4th Avenues)

You must register for the reception by **Wednesday, November 21**. Cost: \$25.00 For information or to obtain a registration form, call or e-mail Jessica Mace at 206-217-9644 or jessicam@cultural.org

Mail or fax registration forms to: **Jessica Mace**, ACE, 200 W. Mercer St., Suite 504, Seattle, WA 98119, fax 206-217-9643. Make checks payable to American Cultural Exchange. Visa/MasterCard accepted.

See Page 2 for Directions! →



Holiday Potluck Party

December 8, 2001 (Sat.), 7:00- 9:30 pm
at the home of Frank and Mary Montgomery

See Page 3 for Details! →



Kobe Jazz Concert at Dimitriou's Jazz Alley

Thanks for joining us for the 2nd Annual Sister City Jazz Day on September 10th! We welcomed **Reika JJ**, the 2001 Kobe Jazz Vocal Queen from Kobe, who sang with Seattle's finest jazz trio: **John Bishop** on drums, **Doug Miller** on bass and **Randy Halberstadt** on piano. A packed house of over 300 people enjoyed the concert.

Big thanks to **Dimitriou's Jazz Alley**, **Shinkaichi Music Street**, **Kobe Trade Information Office**, and all the volunteers who helped make this event possible. A special thanks to Seattle City Council member **Heidi Wills** for introducing Reika JJ, and to **Sandy Weiss**, **Deanna Haley** and **Mari Carpenter** for selling the raffle tickets. Our raffle of baseball prizes, including signed baseballs by **Ichiro Suzuki** and **Kazuhiro Sasaki**, raised more than \$1,000 for our upcoming 45th anniversary events next year. Thanks to the Seattle Mariners for the great donated prizes! We look forward to the 3rd annual jazz concert next year!



THANK YOU!!

A Big "Thank You" to our Corporate Sponsors!

We greatly appreciate the support of the following businesses and organizations.

American Cultural Exchange
Bank of America
The Boeing Company
Corporate Computer, Inc.
Frontier Geosciences, Inc.
Hotel Grand Vista

Huttig Building Products
JD Cook Travel
Japan-America Society
JET Alumni Association
Kobe Trade Information Office
Microsoft Corporation

Mithun, Inc.
New Century GlobalNet
Nintendo of America
Nippon Express USA, Inc.
NT Group, Inc.
Odyssey Maritime Discovery Center
Port of Seattle

Pure West Construction
Seattle Mariners
Seattle Sounders
United Airlines
Uwajimaya
Yamato Transport USA, Inc.
YMCA of Greater Seattle



Message from the Chair

Karin Zaugg

Autumn Greetings! Thank you for all your support at our summer and fall events! In these troubling times, it is even more important that we reach out to our community and our international neighbors. We here at SKSCA are now in the process of planning events and exchanges for our 45th anniversary in 2002. We plan to host a delegation from Kobe in the summer for SEAFAIR activities, and hope to send a delegation to Kobe in November 2002. If you would like to be more involved in the activity planning process, please contact me.

It's time again to renew or become a member of SKSCA. Your membership is a tax-deductible donation and helps us get the word out about Seattle-Kobe activities. Please see the membership form on the back of this newsletter for more details. Thank you for your continued support!

I look forward to seeing you at the Sister Cities Reception on November 27th, or at our annual Holiday Party on December 8th!

SKSCA Board of Directors 2001-02

Karin Zaugg, Chair	206-325-6091	karin_zaugg@hotmail.com
Stacey Jehlik, Vice Chair	206-523-2220	stacers@attglobal.net
Sean Young, Secretary	206-728-0610	sean@hyogobcc.org
Bruce Robb, Jr., Treasurer	206-436-1463	brobbjr@msn.com
Katsuko Kataoka Brooke	425-861-7865	kk.brooke@verizon.net
Mari Maruyama Carpenter	425-398-1153	mmaruyama@laurasian.org
Tom Horsley	206-382-5331	thorsley@seattlemca.org
Tish Johnson	206-766-9288	tish@ntgroup.net
Jean Joichi	206-441-5352	jjoichi@antiochsea.edu
Akiko Kawai	206-374-0180	aykawai@hotmail.com
Takumi Ono	206-235-5235	takumi_ono@junglecity.com
Iku Skeels	425-637-1938	skeels@winstarmail.com
Hide Sueyoshi	206-346-4317	hsueyoshi@seattlemariners.com



(Continued from page 1)

Getting to the Seattle Sister Cities Reception

Artic Building Dome Room
700 - 3rd Avenue

(On Cherry St. between 3rd & 4th Avenues)

Access the building via the Cherry street entrance between 3rd and 4th avenues. The wheelchair accessible entrance is via the 3rd avenue entrance; take the elevator to the 3rd floor. If driving, use street parking and area garages.

This event is organized by: **American Cultural Exchange, City of Seattle** and the **Sister City Coordinating Committee**, with the cooperation of the **Ethnic Heritage Council, Trade Development Alliance of Greater Seattle, Washington Council on International Trade**, and the **World Affairs Council**.



Did you Know???

Former JETs Return to Seattle

Some former JET (Japan Exchange and Teaching Program) participants are back in Seattle!

In early September, **Alex and Aki Parle** and their daughter **Yukino** moved to Seattle from Kobe. Alex worked for the City of Kobe on the JET Program from 1996 to 1999 as a Coordinator for International Relations. He then spent the following two years working on the Universal Studios Japan project. He is looking for work in the human resources field. You can contact Alex and Aki at 206-365-7962 or aparle@earthlink.net.

Marc and Paige Porter recently moved to the Seattle area after spending 3 years in Utah and 1 year in New Mexico. Marc now works as an attorney for Perkins Coie LP in the corporate finance group, with an emphasis on venture capital fund formation and investments. Before law school, Marc worked for the City of Kobe for 1 year as a JET coordinator of international relations. He was born and raised in the Seattle area. Paige is from Golden, Colorado. Marc and Paige are the parents of three children: **Kelsey** (age 6), **Brittney** (age 4), and **Braden** (age 2). Marc can be reached at work at 206-583-8888.

The **Japanese Community Queen, Monica Fujii** and her parents traveled to Kobe in July. Ms. Fujii represented Seattle in the Kobe Matsuri opening ceremony and parade.

Kobe Mayor **Kazutoshi Sasayama** has retired after serving as mayor of Kobe for three terms, a total of 12 years. We wish the former mayor and his wife **Midori** an enjoyable retirement.

Kobe's new mayor-elect is **Tatsuo Yada**, who has already served the City of Kobe for 38 years in many positions, including the Housing Bureau, Planning & Coordinating Bureau, Airport Project Head Office, and Public Health and Welfare Bureau. He retired in March 2000 from the Kobe

Kobe YMCA Students Visit Seattle

This summer 18 **Kobe YMCA** students & their chaperone, **Takashi Maeda** enjoyed ten days in Washington State, hosted by the **YMCA of Greater Seattle's West Seattle branch**.



After arriving on the 22nd of July, students spent the first three days with host families in Seattle, sightseeing throughout the city. On the 25th, they traveled to YMCA Camp Dudley in the East Cascades for a three day camping experience with American children. They returned to their host families for the weekend, and spent their last day teaching a cultural lesson, including origami, songs and dance to children at a YMCA child care program. This exchange program with the YMCA is in its 35th year.

City Government after working for the Public Health & Welfare Bureau as Director General. (In Japan, it is compulsory to retire at age 60.) He was then appointed Deputy Mayor in April 2001. In August 2001, he resigned his position as Deputy Mayor to become a mayoral candidate. Mr. Yada was elected on Oct. 28 and will serve a four-year term beginning November 20, 2001. Congratulations on your election Yada-san!

What's Happening...

SEAFAIR Student Ambassadors Visit Kobe

The SEAFAIR student ambassadors visited Kobe, Japan between May 13-18, 2001. This year's ambassadors were **Emily Mitchell** (Ballard), **Brianne Lum** (Renton), **Nicole Cedersblom** (Bellevue), **Allison Baldwin** (Redmond), **Grace Navarro** (Ingraham), **Kirsten Hawkins** (Shorecrest) **Daniel Foe** (Ballard), **Danny Taylor** (Redmond), **Jordan Carrell** (Inglemoor), **Ben Gigli** (Shorecrest), **Long Phan** (Evergreen) and **Luis Cabezas** (Redmond). They were accompanied by chaperones **Beth Wojick**, SEAFAIR President, **Eric Radoovich**, SEAFAIR Vice President, **Art Merrick**, SEAFAIR Board Chair and his wife **Velva Merrick**.

The students really enjoyed the opportunity to experience Japanese culture by staying with host families. Other highlights included a tour of the Kobe Port, the Sumadera Temple, a courtesy call on Mayor Sasayama, a visit to Fukiai High School, and a tour of the Akashi Kaikyo Bridge.

Special thanks to all who hosted and assisted the group in Kobe: **Mr. Kusumoto**, **Mr. Yamada**, **Mr. Ueda** and **Mr. Suda**, **International Division**, **City of Kobe**, **Mr. Yamasaki** and **Mr. Takeo**, **Fukiai High School**, and **Mr. Kimura**, **Board of Education**. Special thanks to **Mr. Kiyoyuki Kanemitsu**, a long time friend of SEAFAIR and co-founder of the SEAFAIR Ambassador Program.



During renovation work on the Kobe Bell

Kobe Bell Renovations Complete!



The Kobe Bell has a new base! SKSCA is very pleased to report that the repairs to the base of the Kobe Bell have been completed. **Kathleen McLaughlin** at the Seattle Center coordinated the restoration work. Thanks to everyone involved in this project to help care for this important symbol of our sister city relationship: **Seattle Center**, **Dave Quiring**, **Quiring Monuments**, **Dale Brotherton**, **Takumi Company**, **Yutaka and Tazue Sasaki**, **Cherry Blossom Festival**, **Tomio Moriguchi**, **Uwajimaya**, **Ginn Kitaoka**, **Hyogo Business and Cultural Center**, **Takaaki Matsuda**, **Kobe Trade Information Office**, and a very special thanks to **Aki Takeda** at the **Consulate General of Japan**. SKSCA is making plans for a rededication



Holiday Potluck Party

December 8, 2001 (Sat.), 7:00– 9:30 pm
at the home of Frank and Mary Montgomery

Come and mingle with SKSCA members and friends in a warm holiday setting! Beverages will be provided, but please bring a dish to share (your favorite appetizer, main course, salad, or dessert). If you can attend, please sign-up for a potluck dish with **Stacey Jehlik** (stacers@attglobal.net or Tel: 206-525-7991). See you there!!!

Directions

From I-5 (North or South):

Take the I-90 exit east and get into the far right lane as quickly as possible. Take Exit #2—Rainier Ave. South—the only exit before you cross the floating bridge to Mercer Island and Bellevue. Turn right onto Rainier Ave. South and continue about two miles to South McClellan St. See instructions below.

Coming West on I-90 from Bellevue:

Take the second I-90 exit (Rainier Ave. South-Southbound) after merging from the I-90 tunnel under the Mt. Baker Bridge. Merge onto Rainier Ave South. Continue about 2 miles to South McClellan St. See instructions below.

Turn left onto McClellan and continue east and then south about 10-12 blocks (McClellan curves to the right and becomes Mt Rainier Drive S.) At S Hanford St. (a church on the right and a divided boulevard ahead), turn left (head east) one block to Cascadia Ave. South. Turn right onto Cascadia and continue about 5 blocks to **3448 Cascadia Ave. South** (Tel: 206-723-5337).

Kobe Day at the Mariners Draws Huge Crowd!



Fans Cheer for Ichiro and Sasaki at the 2001 Kobe Day at the Mariners Event

Over 300 members and friends of the Seattle-Kobe Sister City Association participated in our 4th annual Kobe Day at the Mariners event on July 28, 2001. We created a huge card section, and spelled out cheers for Ichiro and Sasaki. As you can see from the photo, we gave it a good try, but we plan to have larger, brighter cards for next year! Practice makes perfect! A big thanks to **Tom** and **Katsuko Brooke** for all their hard work organizing ticket distribution!

This year's Kobe Festival Representatives **Mr. Ryosuke Arioka** and **Ms. Rumi Okuda** joined us. They were here for a week to participate in the SEAFAIR Torchlight Parade and other SEAFAIR events, another annual sister city program.

SKSCA thanks the following organizations for their support of the 4th Annual Kobe Day at the Mariners: **Hyogo Business & Cultural Center**, **Japan-America Society of the State of Washington**, **Japanese American Chamber of Commerce of Washington State**, **Kobe Trade Information Office**, **Nikkeijinkai** (Japanese Community Service of Seattle), and the **Shunju Club** (Japan Business Association).

SKSCA would like to salute the Seattle Mariners, particularly Ichiro Suzuki and Kazuhiro Sasaki for a spectacular 116-win season. Way to go, M's!!

Kawasaki Junior High School Summer Program 2001: The Fantastic Final Fifth Summer!

This summer marked the fifth and final Kawasaki Junior High School Summer Programs held on the UW campus and sponsored by the **Foundation for International Understanding Through Students (FIUTS)**. The program was funded by a five-year grant from **Kawasaki Heavy Industries**, awarded on their 100th anniversary and designed to provide travel for 60 Japanese 8th graders each summer who suffered directly in the 1995 Kobe Earthquake.

This summer 34 students from Kobe traveled to Seattle for 10 days in August. Highlights of this year's program included the weekend homestay with local families, a two-night sleep-away camp experience at Warm Beach

Camp outside of Everett, watching Ichiro and Sasaki win another for the Mariners, and the final BBQ on the shores of Lake Washington. During the award ceremonies, special plaques were presented to representatives from the **Ministry of Education**, the **Hyogo Prefectural Government**, and

Kawasaki Heavy Industries, listing the names of all 154 students who benefited from this program.

While FIUTS is sad to see this program end, they are happily continuing their **Hyogo High School** and **Miami Kyushu Junior College** programs. For anyone interested in employment opportunities or in volunteering to be a host family for these remarkable students, please contact FIUTS at 206-543-0735 or email info@fiuts.org. You can also check out their web site at: www.fiuts.washington.edu.

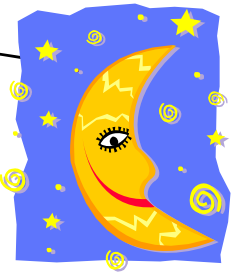


OYASUMI - GOODNIGHT Japanese Lullabies and Restful Melodies

Seattle-based singer **Aiko Shimada** and SKSCA member and

koto master **Elizabeth Falconer** have collaborated on a new recording of old songs from Japan; lullabies and age-old favorites that have been used to soothe children and adults alike for centuries. These two musicians provide fresh interpretations, bringing their unique cross-cultural experiences and innovative musical approaches to this lovingly conceived recording. Their new arrangements, compellingly understated, bring out the warmth of Aiko Shimada's voice and the ephemeral beauty of the 13-string koto. Besides well-known pieces such as "Red Dragonfly" and "Dreamy Moonlit Night," the CD includes three of their own compositions. The works are sung largely in Japanese, with some English lyrics artfully woven in to about a third of the 16 selections. Whether one understands Japanese or not, Aiko Shimada's voice is both intimate and nurturing, and the sounds of Elizabeth Falconer's koto add a nostalgic and romantic element to the songs. All in all, the music is as comforting as a goodnight hug.

The CD is released by **Koto World**, www.kotoworld.com. CDs are \$15.00 plus \$1.50 for shipping and handling; checks should be sent to Koto World, 15722 SE 166th Place, Renton, WA 98058. For more information on their back-



grounds and performances, visit www.kotoworld.com. Contact: Elizabeth Falconer, phone: (425) 430-1972, e-mail Oya-



Upcoming Events

- Nov. 27 (Tues.) – Seattle Sister Cities Reception.
- Dec. 8 (Sat.) – Holiday Potluck Party.
- Jan. 16, 2002 (Wed.) – Great Hanshin-Awaji Earthquake Remembrance Ceremony at the Kobe Bell.



To describe a business as being “the leading interactive entertainment company” might have had little meaning a few years ago. But in today’s intensely competitive environment, it is a hard-won, billion-dollar title that belongs to Nintendo.

According to one description of the Nintendo phenomenon, “It’s the only popular entertainment art where story telling is a shared responsibility with the end user.” Nintendo has maintained its cutting-edge, state-of-the-art position in the forefront of this exciting arena where art and technology converge to create a new entertainment experience.

Video game super heroes like Mario, Donkey Kong, Pikachu, and Link have engaged new generations of devotees, and Nintendo’s sports-related games offer thrilling, lifelike involvement for the competitive spirit. Demand for Nintendo products has been intense. When Pokemon Yellow was released in 2000, it became the fastest-selling video game in history. Over one million copies were sold in two weeks, a rate of nearly one game per second. That record is only one of many industry-leading milestones for Nintendo.

Nintendo of America’s offices in Redmond represent the Japanese parent company as operational headquarters for the Western Hemisphere. This King County presence contributes significantly to the Pacific Northwest economy. The Redmond campus also includes a unique educational institution called the DigiPen Insti-

The Nintendo logo, featuring the word "Nintendo" in a bold, red, sans-serif font, enclosed within a red, rounded rectangular border.

tute of Technology, the world’s first four-year program awarding a Bachelor of Science Degree in Real-Time Interactive Simulation.

Nintendo and its employees are heavily involved in the community in which they work. In addition to its many contributions to local charities, Nintendo has a strong commitment to, and active participation in, The Starlight Foundation. The Foundation is a national organization established to grant the wishes of critically ill children and to provide some lighthearted fun in their lives. Through the Starlight Foundation, Nintendo donates interactive game centers to children’s hospitals. A mobile Nintendo Fun Center can roll to a child’s bedside and offer hours of relief from the suffering and boredom of a long hospital stay. One estimate suggested that these Fun Centers entertain over 57,000 children every month.

Company officials at Nintendo refer to their corporation as “playful” and in touch with its customers. Perhaps this is the industry leader’s key to its success and its ability to bring great joy to gamers around the world.

CORPORATE MEMBER PROFILES



New Century GlobalNet

New Century GlobalNet Corporation (NCG) was formed in 1999. We are a Japanese company with headquarters in Kobe and offices in Yokohama, Tokyo, Nagoya, Osaka and Fukuoka. Our United States subsidiary is located in Seattle so we have strong ties to both Japan and Washington State. NCG is a next generation Internet service provider, dedicated to filling the gap between IT technologies in Japan and the United States.

We are thrilled to have our headquarters in Kobe, Japan. There has been such a resurgence of activity since the earthquake that it is has become a vibrant and exciting place to do business. We have been very fortunate and are pleased to have been welcomed into the Kobe business community.

In April of 2001 we launched our service SkyFiber. SkyFiber is NCG's broadband Internet access service. NCG's SkyFiber network combines the best aspects of fiber optic and Fixed Wireless Access (FWA) technologies. We use fiber connections between our hub sites, data centers, and the Internet, and we use a combination of fiber and radio access to reach each customer’s building. Because data is transmitted and received through small parabolic antennas installed on building rooftops, SkyFiber can be installed quickly, even if the building has no existing fiber optic cable connection. This technology provides NCG an efficient cost structure, allowing us to offer very competitive pricing as well as fast, high-capacity data transmission similar to fiber optic cable solutions. It takes only 20 seconds to download a 3 -MB data file — that’s one-tenth of the time it takes with 128-kbps ISDN service. We currently offer service in parts of Kobe, Fukuoka, Osaka and Nagoya, with plans to expand out from there. For more information about NCG please visit our website: www.ncgnet.co.jp.

The Seattle-Kobe Sister City Association is working to strengthen the bonds between the two wonderful cities of Kobe and Seattle. We are very pleased to be part of an organization with such a great mission.

New Membership/Membership Renewal/Volunteer Form

Name _____

Company _____

Address _____

Address _____

City _____ State _____ Country _____ Postal Code _____

Phone _____ Fax _____ E-mail _____

Please enclose your mailing label if there are any changes. Thank you!!

SKSCA is a 501(c)3 non-profit organization, IRS tax identification # 23-7034425.

Membership dues are a tax deductible donation.

Individual \$30 Family: \$50 Senior/Student: \$15 Corporate: \$125

_____ I am a **current** member renewing my dues and I have enclosed \$_____.

_____ I am a **new** member and I have enclosed \$_____.

_____ I am interested in volunteer opportunities. Please send me more information.

Please mail this form and a check to:

SKSCA c/o Fred Taucher, Corporate Computer Inc., 11300 25th Ave. NE, Seattle, WA 98125



SEATTLE-KOBE SISTER CITY ASSOCIATION

c/o Corporate Computer Inc.
11300 25th Ave. NE
Seattle, WA 98125 USA

Non-Profit Org.
U.S. POSTAGE
PAID
SEATTLE, WA 981
PERMIT NO. 5503